



PHARMACY
CARE HOME SERVICES

WHAT WE DO

M&D Green has pharmacies across Scotland that serve local communities and care homes. We are ideally positioned to provide an extensive and personalised service to patients.

Every M&D Green pharmacy is equipped to provide care home service. We provide a localised approach which allows our pharmacy teams to develop close working relationships with each individual care home. We tailor our service to meet the needs of the residents and staff to ensure a safe, efficient and effective delivery of medicines. We communicate with healthcare providers daily to prioritise urgent medicines and ensure same day delivery.

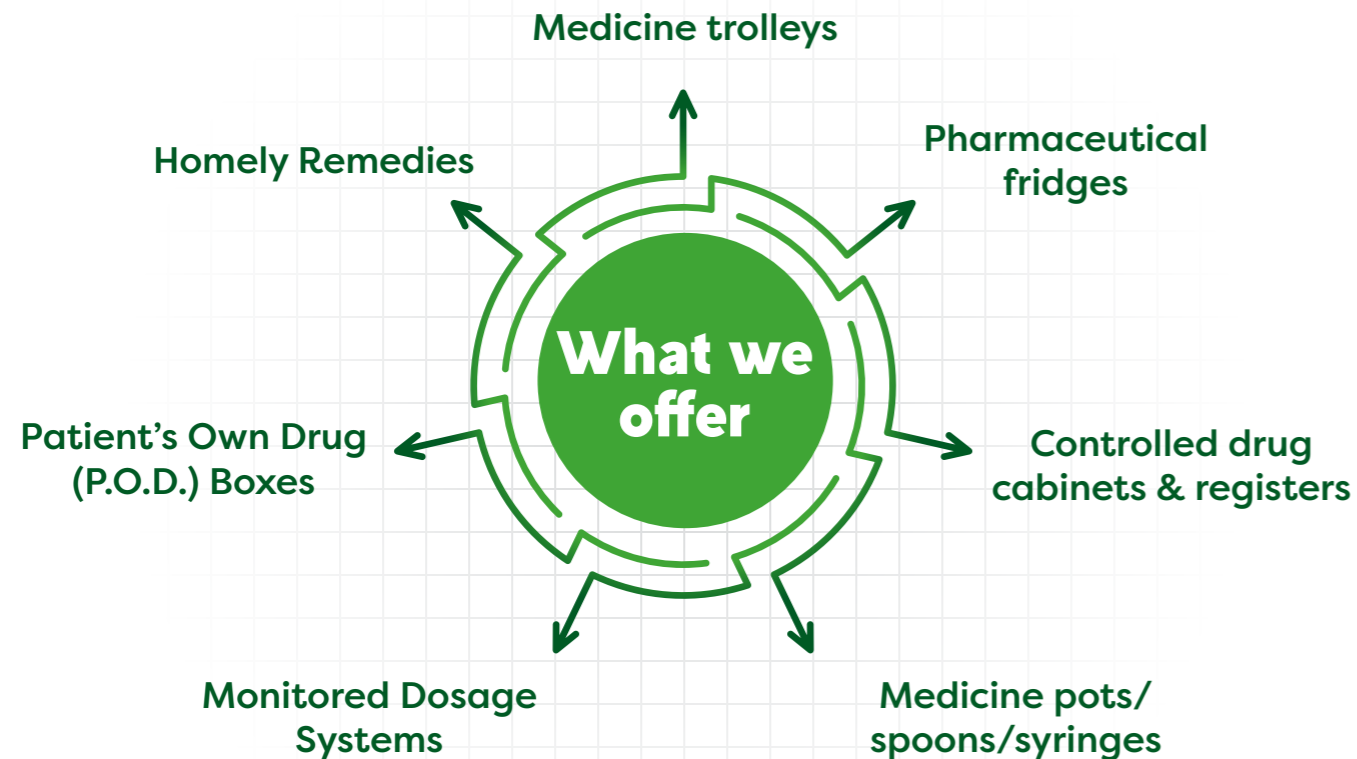


WHAT WE OFFER

It is part of our role to tailor the service to the pharmaceutical needs of each individual care home. We have spent time developing recording templates that document all aspects of medicine management, from when the medicine enters the care home to when it leaves.

We can facilitate in the ordering and delivery of necessary equipment and resources to aid the care home with their medication management.

These include, but are not limited to:



We develop good working relationships with GP practices involved in prescribing for the residents to help manage discrepancies and ensure continuity of services. We offer collection services for prescriptions from GP practices for both acute and repeat medicines. We provide priority same day delivery of acute medicines and aim to deliver monthly medicines 1 week prior to cycle start date. We are flexible with our delivery schedule and can accommodate for care home requirements.

We provide medication audits that have been tailored to meet care inspectorate guidance and review recording, handling and storage. In addition, we create action plans and help in the review of practices involving medicines management within the care home.

Our personal on-site training, award winning, "Medicines in the care home", manual and specially designed digital learning modules have been developed to support care home staff with medicines management.

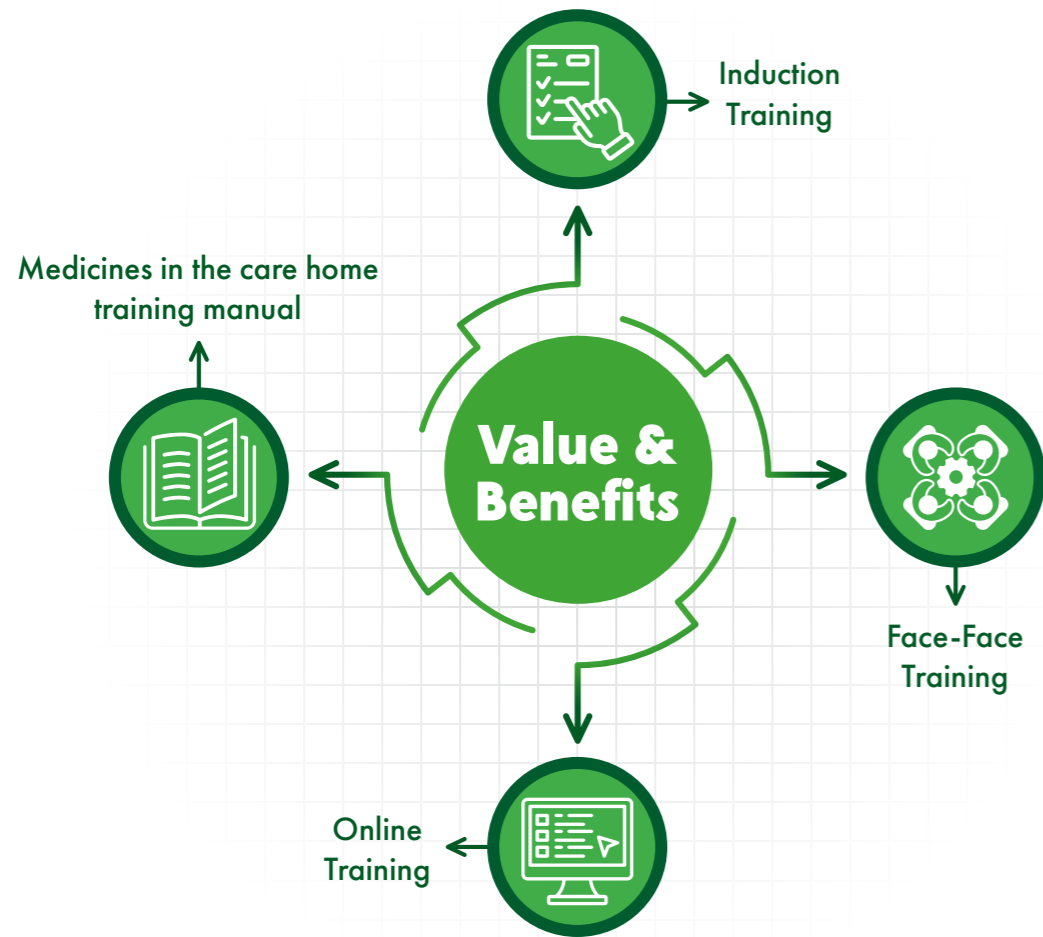
Our recent focus has been building relationships with E-MAR providers to help bridge relationships for care homes interested in digital MAR charts.



electronic
MAR
Helping reduce medication errors

TRAINING

We believe that training staff in medicine management and administration is a key role in delivering a successful medication service. We want to ensure staff have the confidence, skills and knowledge to deliver safe medicines administration to their residents.



INDUCTION TRAINING

This is part of our onboarding process, where we introduce our service, supporting documents and training to staff in the care home.



FACE-FACE TRAINING

We have 2 different types of face-face training. The first training provides background on the reason why we give medicines, the ever changing functions within our body and what type of medicines are prescribed. The second training covers ordering, receiving, administering, and returning medicines and palliative care. Our face-face training can be delivered in person or via virtual dial-in.



ONLINE TRAINING

Our online training allows staff to complete modules from any location. Additionally, it provides care home managers with complete oversight of each staff members journey through the modules. It tests knowledge through multiple-choice questions and provides certificates on successful completion of modules.



MEDICINES IN THE CARE HOME TRAINING MANUAL

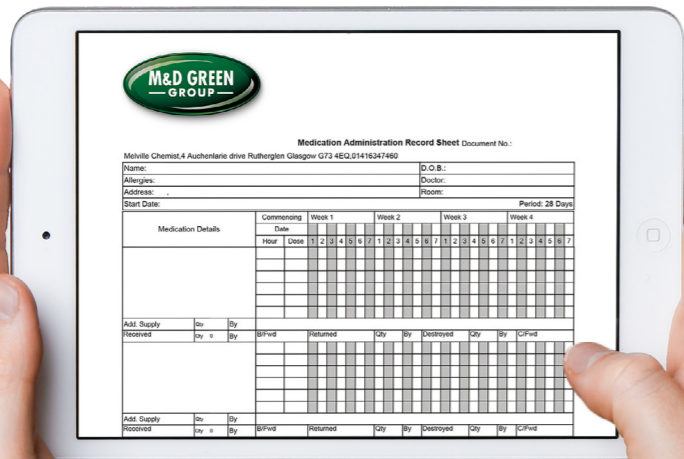
Our award winning manual is a fantastic resource to have within the care home. It can be used as an individual training tool with multiple-choice questions, activities and note sections or as a learning source to be used when needed.

E-MAR

We are currently working closely with 3 E-MAR companies but are not limited to:



We have provided support to care homes when making the decision to move away from paper to digital MARs and provide advice in the transition.



PACKAGING

The formulation is crucial to the safe delivery of medication as can be the type of packaging. Packaging must protect the stability of the medication but also be accessible to those administering. There has been a variety of systems developed to aid the elderly in taking their medication and packaging to assist carers in prompting or administering.

The system we can offer are:

- ✓ **original packs**
- ✓ **Monitored dosage system: 28-day colour coded**
- ✓ **Monitored dosage system: 7-day week**





At the M&D Green group, we firmly believe in a model of complete care, ensuring holistic healthcare for each and every patient.

In addition to our dispensing and support services, we also focus on medicine safety, appropriateness and reduction of inappropriate polypharmacy. We firmly believe that evidenced based practice, coupled with high levels of patient involvement and multidisciplinary working relationships with other healthcare providers enables us to play a vital role in ensuring first class patient care

We are exceptionally patient focus and believe strongly that quality of life and wellbeing are essential aspects to our care home services.

GET IN TOUCH

We would love to discuss how we can support your Care Home. If you are interested in working with us, please email our head office team at admin@md-green.com



M&D GREEN
• DISPENSING CHEMIST •

www.md-green.com



PRESCRIPTION COLLECTION & DELIVERY SERVICE

M&D GREEN
• DISPENSING CHEMIST •

www.md-green.com

FREE PRESCRIPTION COLLECTION & DELIVERY SERVICE

TRANSIT
CONNECT

SC15A EOA

*Delivering care
to the Community*

M&D GREEN
— GROUP —

Head Office:
154 Cumbernauld Road, Muirhead, Glasgow, G69 9DX
www.md-green.com